

IMU Calibration After Firmware Update

Home / Phantom 3

976 5 2015-05



david.p.mann

United States

Offline

[tr]/[tr]

I believe it is prudent to perform an IMU Calibration after performing a firmware update. This issue has been discussed on Inspire 1 and the Phantom 2 forums.

I know Tahoe Ed (a DJI representative) personally agrees and has stated in these forums that this is his standard practice as well. You can search for his posts.

Questions for Tahoe Ed and DJI Autumn - What is DJI's official position on the need for IMU Calibration after a firmware update? If it is prudent to perform an IMU calibration after a firmware update, why is the IMU Calibration procedure not included in the Phantom 3 Professional (or Advanced) User Manual or in the firmware update instructions? The "Check IMU" and "IMU Calibration" options in the DJI Pilot app settings Menu are not even listed or described in the P3 User Manual. Why?

Here is my procedure for performing an IMU Calibration (this is a repeat of info I have provided in responses to other forum posts)

To perform an IMU calibration, the P3 and the remote controller (RC) must be turned on with the DJI Pilot app running on the Apple IOS device, which is connected with a Lightning cable to the RC's USB port. (An Android device and appropriate USB cable can also be used - but I only have experience with Apple IOS devices.)

From the DJI Pilot app main menu screen, select Camera. There are several ways to get to the correct settings menu - the fastest is to select the "Mode" button in the upper left (to right of home symbol). This will bring up the "MC Settings" screen. Use your finger to scroll to the bottom of the MC Settings screen to reveal the "Sensors" menu item. Select "Sensors" menu item. Scroll to the bottom of the Sensors menu screen to reveal "Check IMU" and "IMU Calibration" choices.

Caution: Before starting an IMU Calibration, the P3 should be "cold" (i.e., not recently flown) and must be sitting on a firm, level surface with no vibrations, other electronics, magnets (e.g., stereo speakers) or metal nearby (this includes rebar in your concrete driveway). I use a perfectly level ceramic floor tile in my family room. Also, you must not touch, bump or move the P3 during the IMU calibration and you should minimize/avoid any floor vibrations (people walking nearby, doors slamming, spouse vacuuming in next room, etc.). Start the IMU Calibration, click through the message and warning screens. The IMU Calibration takes 3-10 minutes - there is a status bar that will eventually go to 100% - it may take a minute or two before it changes from 0%. Ensure you get an IMU Calibration complete message.

I also recommend doing a Gimbal Auto Calibration immediately after the IMU Calibration is finished with the P3 still sitting on the same level surface. This should correct any tilted horizons you may be seeing in your videos.

Twitter

Facebook

Favorite

Like 1

2015-5-13 01:23

Reply



ntfa

United States

Offline

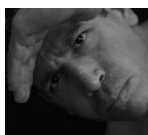
you need a level surface. I use my iphone level and put it on the floor (hardwoods) til I find a spot that is zero level. Then put my phantom there proceed to calibrate. A little tip for you guys.

2015-5-13 01:34

[Reply](#)

[Support](#)

[Opposition](#)



josepsamora

United States

Offline

Thanks for the great instructions.

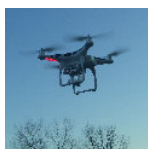
Now that I have done an IMU Calibration I get a IMU Warming Up message when I power up my P3A. I didn't get this before. Anything I can do to go away?

2015-5-15 11:50

[Reply](#)

[Support](#)

[Opposition](#)



CapitAn

Canada

Offline

[josepsamora@gma](#) Posted at 2015-5-15 11:50

Thanks for the great instructions.

Now that I have done an IMU Calibration I get a IMU Warming Up ...

I thought this was normal, mine does it every time I switch it on

2015-5-15 11:56

[Reply](#)

[Support](#)

[Opposition](#)



josepsamora

[CapitAn](#) Posted at 2015-5-15 11:56

I thought this was normal, mine does it every time I switch it on

How long does it usually last for you?

United States

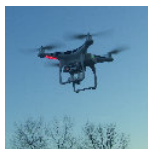
Offline

2015-5-15 12:01

[Reply](#)

[Support](#)

[Opposition](#)



I would say about a minute, which is a long time when you have a battery that is good for 20.

CapitAn

Canada

Offline

2015-5-15 19:41

[Reply](#)

[Support](#)

[Opposition](#)

Bold **Text Color** **Picture** **Add Link** **Emotion**

☐ Jump to the last page

[Contact Us](#) · [DJI.COM](#) · [Online Store](#)